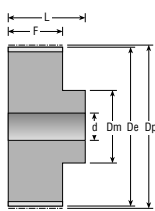


Figur 6F

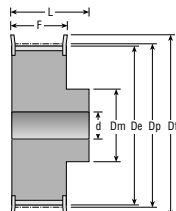
Z	Rembr. Belt w. Riemenbr.	Mat.	Fig.	Best. nr. Part No. Best. Nr.	De	Df	Dm	F	L	d	Vægt Weight Gewicht
10	10	AL	6F	21AT5010N	14,65	19,5	8	15	21	-	0,012
	16	AL	6F	27AT5010N	14,65	19,5	8	21	27	-	0,016
	25	AL	6F	36AT5010N	14,65	19,5	8	30	36	-	0,023
12	10	AL	6F	21AT5012N	17,85	23,0	10	15	21	-	0,016
	16	AL	6F	27AT5012N	17,85	23,0	10	21	27	-	0,022
	25	AL	6F	36AT5012N	17,85	23,0	10	30	36	-	0,031
14	10	AL	6F	21AT5014N	21,05	25,0	13	15	21	-	0,019
	16	AL	6F	27AT5014N	21,05	25,0	13	21	27	-	0,026
	25	AL	6F	36AT5014N	21,05	25,0	13	30	36	-	0,037
15	10	AL	6F	21AT5015N	22,65	28,0	16	15	21	6	0,021
	16	AL	6F	27AT5015N	22,65	28,0	16	21	27	6	0,029
	25	AL	6F	36AT5015N	22,65	28,0	16	30	36	6	0,041
16	10	AL	6F	21AT5016N	24,20	32,0	18	15	21	6	0,025
	16	AL	6F	27AT5016N	24,20	32,0	18	21	27	6	0,035
	25	AL	6F	36AT5016N	24,20	32,0	18	30	36	6	0,050
18	10	AL	6F	21AT5018N	27,40	32,0	19	15	21	6	0,031
	16	AL	6F	27AT5018N	27,40	32,0	19	21	27	6	0,043
	25	AL	6F	36AT5018N	27,40	32,0	19	30	36	6	0,061
19	10	AL	6F	21AT5019N	29,00	36,0	22	15	21	6	0,036
	16	AL	6F	27AT5019N	29,00	36,0	22	21	27	6	0,049
	25	AL	6F	36AT5019N	29,00	36,0	22	30	36	6	0,070
20	10	AL	6F	21AT5020N	30,60	36,0	23	15	21	6	0,038
	16	AL	6F	27AT5020N	30,60	36,0	23	21	27	6	0,053
	25	AL	6F	36AT5020N	30,60	36,0	23	30	36	6	0,076
22	10	AL	6F	21AT5022N	33,85	38,0	24	15	21	6	0,046
	16	AL	6F	27AT5022N	33,85	38,0	24	21	27	6	0,054
	25	AL	6F	36AT5022N	33,85	38,0	24	30	36	6	0,080
24	10	AL	6F	21AT5024N	37,00	42,0	26	15	21	6	0,054
	16	AL	6F	27AT5024N	37,00	42,0	26	21	27	6	0,076
	25	AL	6F	36AT5024N	37,00	42,0	26	30	36	8	0,109
25	10	AL	6F	21AT5025N	38,60	44,0	26	15	21	6	0,058
	16	AL	6F	27AT5025N	38,60	44,0	26	21	27	6	0,081
	25	AL	6F	36AT5025N	38,60	44,0	26	30	36	8	0,116
26	10	AL	6F	21AT5026N	40,20	44,0	26	15	21	6	0,062
	16	AL	6F	27AT5026N	40,20	44,0	26	21	27	6	0,085
	25	AL	6F	36AT5026N	40,20	44,0	26	30	36	8	0,120
27	10	AL	6F	21AT5027N	41,80	48,0	30	15	21	8	0,064
	16	AL	6F	27AT5027N	41,80	48,0	30	21	27	8	0,090
	25	AL	6F	36AT5027N	41,80	48,0	30	30	36	8	0,128
28	10	AL	6F	21AT5028N	43,35	48,0	32	15	21	8	0,071
	16	AL	6F	27AT5028N	43,35	48,0	32	21	27	8	0,092
	25	AL	6F	36AT5028N	43,35	48,0	32	30	36	8	0,128
30	10	AL	6F	21AT5030N	46,55	51,0	34	15	21	8	0,075
	16	AL	6F	27AT5030N	46,55	51,0	34	21	27	8	0,105
	25	AL	6F	36AT5030N	46,55	51,0	34	30	36	8	0,150

**B2**

AT5

5 mm**FORBORET
WITH PILOT BORE
VORGEBOHRT**

Figur 6



Figur 6F

Z	Rembr. Belt w. Riemenbr.	Mat.	Fig.	Best. nr. Part No. Best. Nr.	De	Df	Dm	F	L	d	Vægt Weight Gewicht
32	10	AL	6F	21AT5032N	49,70	54,0	38	15	21	8	0,088
	16	AL	6F	27AT5032N	49,70	54,0	38	21	27	8	0,123
	25	AL	6F	36AT5032N	49,70	54,0	38	30	36	8	0,176
36	10	AL	6F	21AT5036N	56,05	63,0	38	15	21	8	0,114
	16	AL	6F	27AT5036N	56,05	63,0	38	21	27	8	0,160
	25	AL	6F	36AT5036N	56,05	63,0	38	30	36	8	0,230
40	10	AL	6F	21AT5040N	62,45	66,0	40	15	21	8	0,138
	16	AL	6F	27AT5040N	62,45	66,0	40	21	27	8	0,193
	25	AL	6F	36AT5040N	62,45	66,0	40	30	36	8	0,276
42	10	AL	6F	21AT5042N	65,60	71,0	40	15	21	8	0,180
	16	AL	6F	27AT5042N	65,60	71,0	40	21	27	8	0,205
	25	AL	6F	36AT5042N	65,60	71,0	40	30	36	8	0,284
44	10	AL	6	21AT5044N	68,80	-	45	15	21	8	0,185
	16	AL	6	27AT5044N	68,80	-	45	21	27	8	0,228
	25	AL	6	36AT5044N	68,80	-	45	30	36	8	0,315
48	10	AL	6	21AT5048N	75,15	-	50	15	21	8	0,200
	16	AL	6	27AT5048N	75,15	-	50	21	27	8	0,280
	25	AL	6	36AT5048N	75,15	-	50	30	36	8	0,400
60	10	AL	6	21AT5060N	94,25	-	65	15	21	8	0,307
	16	AL	6	27AT5060N	94,25	-	65	21	27	8	0,430
	25	AL	6	36AT5060N	94,25	-	65	30	36	8	0,614