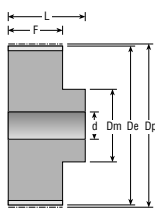


Figur 6F

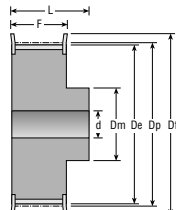
Z	Rembr. Belt w. Riemenbr.	Mat.	Fig.	Best. nr. Part No. Best. Nr.	De	Df	Dm	F	L	d	Vægt Weight Gewicht
10	10	AL	6F	21T5010N	15,05	19,5	8	15	21	-	0,012
	16	AL	6F	27T5010N	15,05	19,5	8	21	27	-	0,016
	25	AL	6F	36T5010N	15,05	19,5	8	30	36	-	0,023
12	10	AL	6F	21T5012N	18,25	23,0	10	15	21	-	0,016
	16	AL	6F	27T5012N	18,25	23,0	10	21	27	-	0,022
	25	AL	6F	36T5012N	18,25	23,0	10	30	36	-	0,031
14	10	AL	6F	21T5014N	21,45	25,0	13	15	21	-	0,019
	16	AL	6F	27T5014N	21,45	25,0	13	21	27	-	0,026
	25	AL	6F	36T5014N	21,45	25,0	13	30	36	-	0,037
15	10	AL	6F	21T5015N	23,05	28,0	16	15	21	6	0,021
	16	AL	6F	27T5015N	23,05	28,0	16	21	27	6	0,029
	25	AL	6F	36T5015N	23,05	28,0	16	30	36	6	0,041
16	10	AL	6F	21T5016N	24,60	32,0	18	15	21	6	0,025
	16	AL	6F	27T5016N	24,60	32,0	18	21	27	6	0,035
	25	AL	6F	36T5016N	24,60	32,0	18	30	36	6	0,050
18	10	AL	6F	21T5018N	27,80	32,0	19	15	21	6	0,031
	16	AL	6F	27T5018N	27,80	32,0	19	21	27	6	0,043
	25	AL	6F	36T5018N	27,80	32,0	19	30	36	6	0,061
19	10	AL	6F	21T5019N	29,40	36,0	22	15	21	6	0,036
	16	AL	6F	27T5019N	29,40	36,0	22	21	27	6	0,049
	25	AL	6F	36T5019N	29,40	36,0	22	30	36	6	0,070
20	10	AL	6F	21T5020N	31,00	36,0	23	15	21	6	0,038
	16	AL	6F	27T5020N	31,00	36,0	23	21	27	6	0,053
	25	AL	6F	36T5020N	31,00	36,0	23	30	36	6	0,076
22	10	AL	6F	21T5022N	34,25	38,0	24	15	21	6	0,046
	16	AL	6F	27T5022N	34,25	38,0	24	21	27	6	0,054
	25	AL	6F	36T5022N	34,25	38,0	24	30	36	6	0,080
24	10	AL	6F	21T5024N	37,40	42,0	26	15	21	6	0,054
	16	AL	6F	27T5024N	37,40	42,0	26	21	27	6	0,076
	25	AL	6F	36T5024N	37,40	42,0	26	30	36	8	0,109
25	10	AL	6F	21T5025N	39,00	44,0	26	15	21	6	0,058
	16	AL	6F	27T5025N	39,00	44,0	26	21	27	6	0,081
	25	AL	6F	36T5025N	39,00	44,0	26	30	36	8	0,116
26	10	AL	6F	21T5026N	40,60	44,0	26	15	21	6	0,062
	16	AL	6F	27T5026N	40,60	44,0	26	21	27	6	0,085
	25	AL	6F	36T5026N	40,60	44,0	26	30	36	8	0,120
27	10	AL	6F	21T5027N	42,20	48,0	30	15	21	8	0,064
	16	AL	6F	27T5027N	42,20	48,0	30	21	27	8	0,090
	25	AL	6F	36T5027N	42,20	48,0	30	30	36	8	0,128
28	10	AL	6F	21T5028N	43,75	48,0	32	15	21	8	0,071
	16	AL	6F	27T5028N	43,75	48,0	32	21	27	8	0,092
	25	AL	6F	36T5028N	43,75	48,0	32	30	36	8	0,128
30	10	AL	6F	21T5030N	46,95	51,0	34	15	21	8	0,075
	16	AL	6F	27T5030N	46,95	51,0	34	21	27	8	0,105
	25	AL	6F	36T5030N	46,95	51,0	34	30	36	8	0,150



B2

**T5****5 mm****FORBORET  
WITH PILOT BORE  
VORGEBOHRT**

Figur 6



Figur 6F

Z	Rembr. Belt w. Riemenbr.	Mat.	Fig.	Best. nr. Part No. Best. Nr.	De	Df	Dm	F	L	d	Vægt Weight Gewicht
32	10	AL	6F	21T5032N	50,10	54,0	38	15	21	8	0,088
	16	AL	6F	27T5032N	50,10	54,0	38	21	27	8	0,123
	25	AL	6F	36T5032N	50,10	54,0	38	30	36	8	0,176
36	10	AL	6F	21T5036N	56,45	63,0	38	15	21	8	0,114
	16	AL	6F	27T5036N	56,45	63,0	38	21	27	8	0,160
	25	AL	6F	36T5036N	56,45	63,0	38	30	36	8	0,230
40	10	AL	6F	21T5040N	62,85	66,0	40	15	21	8	0,138
	16	AL	6F	27T5040N	62,85	66,0	40	21	27	8	0,193
	25	AL	6F	36T5040N	62,85	66,0	40	30	36	8	0,276
42	10	AL	6F	21T5042N	66,00	71,0	40	15	21	8	0,180
	16	AL	6F	27T5042N	66,00	71,0	40	21	27	8	0,205
	25	AL	6F	36T5042N	66,00	71,0	40	30	36	8	0,284
44	10	AL	6	21T5044N	69,20	-	45	15	21	8	0,185
	16	AL	6	27T5044N	69,20	-	45	21	27	8	0,228
	25	AL	6	36T5044N	69,20	-	45	30	36	8	0,315
48	10	AL	6	21T5048N	75,55	-	50	15	21	8	0,200
	16	AL	6	27T5048N	75,55	-	50	21	27	8	0,280
	25	AL	6	36T5048N	75,55	-	50	30	36	8	0,400
60	10	AL	6	21T5060N	94,65	-	65	15	21	8	0,307
	16	AL	6	27T5060N	94,65	-	65	21	27	8	0,430
	25	AL	6	36T5060N	94,65	-	65	30	36	8	0,614