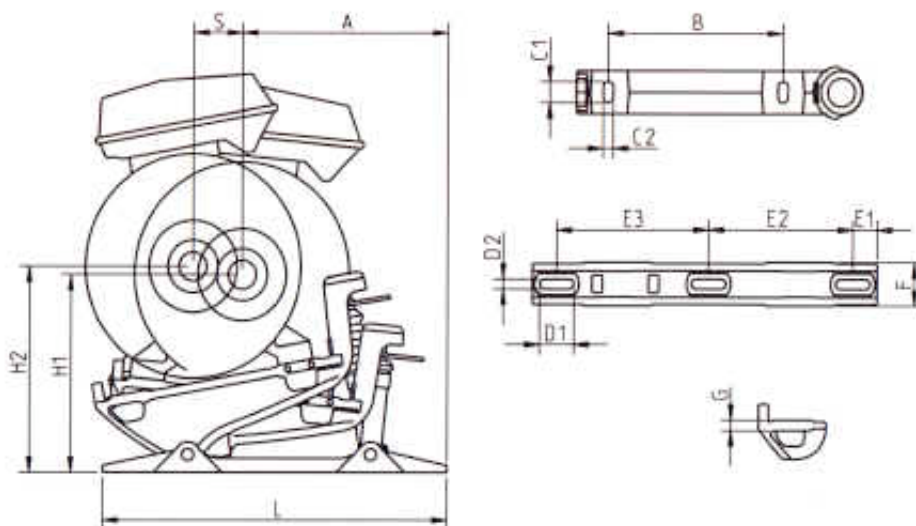


IEC 200-400H

Teknisk specifikation



TEKNISKA SPECIFIKATIONER

Reviderad: 2000-09-06.

| | * MOTORSTORLEK IEC STANDARD | | | | | | |
|------|-----------------------------|-----|-----|-----|------|------|------|
| | 200 | 225 | 250 | 280 | 315 | 355 | 400 |
| A | 436 | 452 | 520 | 542 | 597 | 629 | 715 |
| B | 318 | 356 | 406 | 457 | 508 | 610 | 686 |
| C 1 | 50 | 50 | 60 | 60 | 60 | 70 | 70 |
| C 2 | 20 | 20 | 24 | 24 | 30 | 35 | 35 |
| D 1 | 100 | 100 | 100 | 100 | 100 | 100 | 100 |
| D 2 | 22 | 22 | 28 | 28 | 28 | 33 | 33 |
| E 1 | 70 | 70 | 70 | 70 | 70 | 70 | 70 |
| E 2 | 324 | 324 | 383 | 383 | 418 | 443 | 493 |
| E 3 | 349 | 349 | 408 | 408 | 443 | 468 | 518 |
| F | 116 | 116 | 122 | 122 | 122 | 141 | 141 |
| G | 30 | 30 | 30 | 30 | 30 | 30 | 30 |
| H 1 | 433 | 460 | 484 | 517 | 553 | 634 | 681 |
| H 2 | 468 | 488 | 517 | 541 | 576 | 659 | 703 |
| L | 812 | 812 | 930 | 930 | 1000 | 1050 | 1150 |
| S | 138 | 146 | 136 | 145 | 142 | 145 | 144 |
| VIKT | 116 | 116 | 138 | 138 | 152 | 238 | 268 |

* IEC storlek = Mått i mm. från underkant motorinfästning till centrum motoraxel.

PDF-broschyr (224Kb)