

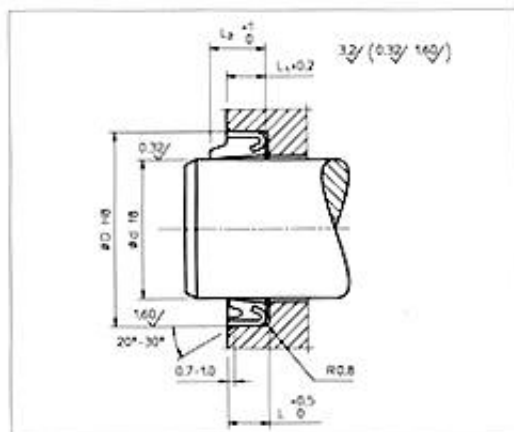
Avstrykare

Typ PA



Typ PA

Polyuretan med stålkapselför montering med presspassning.



Æ d	Æ D	L ₁	L ₂	L	Benämning	ISO
20,0	30,0	7,0	10,0	7,5	PA 20/30x7/10	ISO
25,0	35,0	7,0	10,0	7,5	PA 25/35x7/10	ISO
28,0	38,0	7,0	10,0	7,5	PA 28/38x7/10	ISO
30,0	40,0	7,0	10,0	7,5	PA 30/40x7/10	
32,0	42,0	7,0	10,0	7,5	PA 32/42x7/10	ISO
32,0	45,0	7,0	10,0	7,5	PA 32/45x7/10	
35,0	45,0	7,0	10,0	7,5	PA 35/45x7/10	
36,0	45,0	7,0	10,0	7,5	PA 36/45x7/10	
36,0	46,0	7,0	10,0	7,5	PA 36/46x7/10	ISO
40,0	50,0	7,0	10,0	7,5	PA 40/50x7/10	ISO
45,0	55,0	7,0	10,0	7,5	PA 45/55x7/10	ISO
45,0	60,0	7,0	10,0	7,5	PA 45/60x7/10	
50,0	60,0	7,0	10,0	7,5	PA 50/60x7/10	ISO
50,0	65,0	7,0	10,0	7,5	PA 50/65x7/10	
55,0	70,0	7,0	10,0	7,5	PA 55/70x7/10	
56,0	66,0	7,0	10,0	7,5	PA 56/66x7/10	ISO
60,0	70,0	7,0	10,0	7,5	PA 60/70x7/10	
63,0	73,0	7,0	10,0	7,5	PA 63/73x7/10	ISO
63,0	75,0	7,0	10,0	7,5	PA 63/75x7/10	
63,0	78,0	7,0	10,0	7,5	PA 63/78x7/10	

65,0	75,0	7,0	10,0	7,5	PA 65/75x7/10	
70,0	80,0	7,0	10,0	7,5	PA 70/80x7/10	ISO
75,0	85,0	7,0	10,0	7,5	PA 75/85x7/10	
80,0	90,0	7,0	10,0	7,5	PA 80/90x7/10	ISO
85,0	95,0	7,0	10,0	7,5	PA 85/95x7/10	
90,0	100,0	7,0	10,0	7,5	PA 90/100x7/10	ISO
100,0	110,0	7,0	10,0	7,5	PA 100/110x7/10	
105,0	115,0	7,0	10,0	7,5	PA 105/115x7/10	
110,0	120,0	7,0	10,0	7,5	PA 110/120x7/10	
120,0	130,0	7,0	10,0	7,5	PA 120/130x7/10	
125,0	140,0	9,0	12,0	9,5	PA 125/140x9/12	ISO
140,0	155,0	9,0	12,0	9,5	PA 140/155x9/12	ISO
180,0	195,0	9,0	12,0	9,5	PA 180/195x9/12	